

Please write clearly in block capitals.

Centre number

--	--	--	--	--

Candidate number

--	--	--	--

Surname

Answers

Forename(s)

Candidate signature

GCSE Mathematics

F



Foundation

Paper 2

Calculator

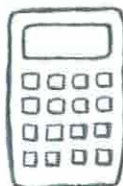
Summer 2018

Time allowed: 1 hour 30 minutes

Materials

For this paper you must have:

- a calculator
- mathematical instruments.



Instructions

- Use black ink or black ball-point pen. Draw diagrams in pencil.
- Answer **all** questions.
- You must answer the questions in the spaces provided. Do not write outside the box around each page or on blank pages.
- Do all rough work in this book. Cross through any work you do not want to be marked.

Information

- The marks for questions are shown in brackets.
- The maximum mark for this paper is 80.
- You may ask for more answer paper, graph paper and tracing paper. These must be tagged securely to the answer book.

Advice

- In all calculations, show clearly how you work out your answer.

For Examiner's Use

Pages	Mark
3	
4 - 5	
6 - 7	
8 - 9	
10 - 11	
12 - 13	
14 - 15	
16 - 17	
18 - 19	
20 - 21	
22 - 23	
TOTAL	

Teacher

Class

8300/MissB/2F

Practice Paper Overview

Q	Topic	Mark	Total
1	Place Value		1
2	Solve One Step Equations		1
3	Factor and Multiples		1
4	Probability in Words		1
5	Using a Calculator		2
6	Money Problem		5
7	Bar Chart		3
8	Area and Perimeter Problem		3
9	Frequency Tree		5
10	Angles in a Triangle		3
11	Speed Distance and Time		2
12	Percentage Change		2
13	Construction		3
14	Best Buy Problem		6
15	Function Machines		4
16	Probability Algebra		4
17	Ratio Problem		3
18	Angles in Polygons		4
19	Compound Interest		3
20	Product of Prime Factors		3
21	Averages from a Table		6
22	Pythagoras' Theorem		3
23	Expand and Simplify		4
24	Right-Angled Trigonometry		2
25	Error Interval		2
26	Venn Diagram		4
		Total	80

Answer **all** questions in the spaces provided.

Do not write
outside the
box.

- 1 What is the value of the 5 in the answer to $51.03 \div 100$?

Circle your answer.

$$= 0.5103$$

[1 mark]

50

5

0.5

0.05

0.005

- 2 Solve $24x = 6$

Circle your answer.

$$x = \frac{6}{24} = \frac{1}{4}$$

[1 mark]

144

4

1

$\frac{1}{4}$

- 3 Circle the multiple of both 6 and 9

6 12 18 24 30 36 42
9 18 27 36 45 54 63

[1 mark]

3

24

36

81

- 4 What is the probability of throwing a **zero** on a fair ordinary dice?

Circle your answer. *There are no zero's on a dice*

[1 mark]

Impossible

Even

Certain

Unlikely

Likely

- 5 (a) Use your calculator to work out $\sqrt{308}$ as a decimal.

Write down your full calculator display

[1 mark]

Answer 17.54992877

- 5 (b) Give your answer to part (a) to 1 decimal place.

[1 mark]

Answer 17.5

6 Pets for life sell dog supplies.



Danielle has two dogs Luna and Holly.

Luna gets 2 squeaky toys and 1 bone in a week.

Holly gets 1 squeaky toy and 3 bones a week.

How much does Danielle spend in a year on toys and bones?

365 days → 52 weeks

[5 marks]

Per week	Per year
$Luna = (2 \times 3.59) + (1 \times 1.99)$	$\pounds 18.73 \times 52 \checkmark$
$= 7.18 + 1.99$	$= \pounds 973.96$
$= \pounds 9.17 \checkmark$	

~~Daniel~~

$Holly = (1 \times 3.59) + (3 \times 1.99)$
$= \pounds 9.56 \checkmark$

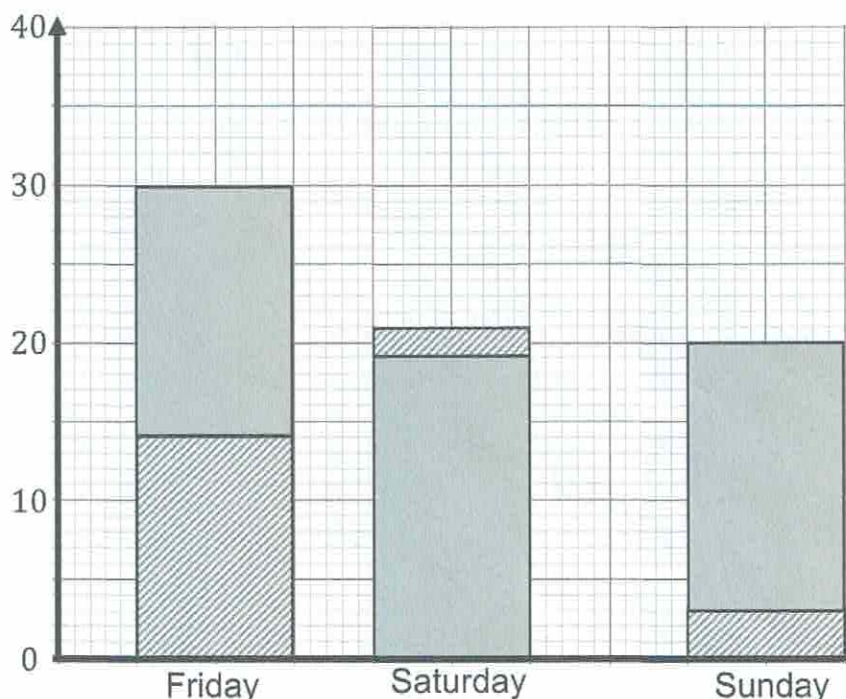
Total per week
$9.17 + 9.56 \checkmark$
$= \pounds 18.73$

Answer $\pounds 973.96 \checkmark$

7 The table shows the sale of hot and cold food in a shop for four days.

Day	Sales of hot food (£)	Sales of cold food (£)
Friday	14	16
Saturday	21	19
Sunday	3	17

Jack uses this information to draw a composite bar chart.



Write down three different mistakes that he has made.

✓✓ Any 3 out of
4 mistakes.
✓✓ 2/4 mistakes
✓ 1/4 mistakes.
[3 marks]

Mistake 1 The axis aren't labelled.

'Frequency' 'Days of the week'

Mistake 2 There is no key.

Mistake 3 Saturday is plotted incorrectly the 19 cold (grey) should be on top of the 21 hot (dashed) bar.

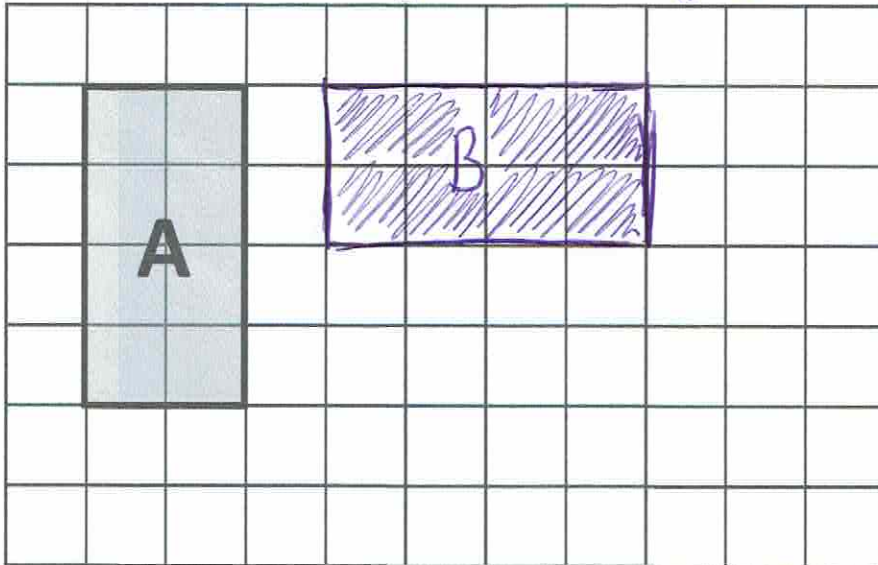
mistake 4 → gaps between bars aren't equal.

8 (a) Draw a rectangle which is congruent to rectangle A.

Label it B.

Anywhere on the grid

[1 mark]

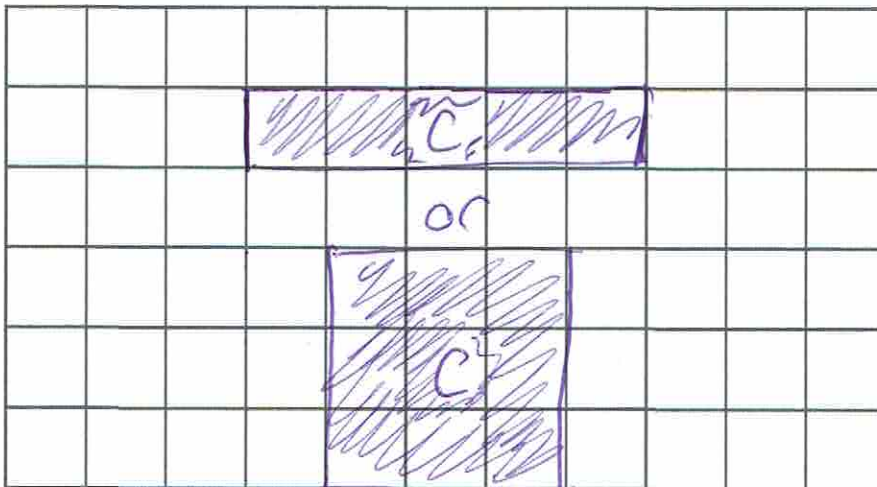


8(b) Draw a rectangle that has the same perimeter as rectangle A, but a different area. Label it C.

→ Inside

→ edges $p=12$

[1 mark]

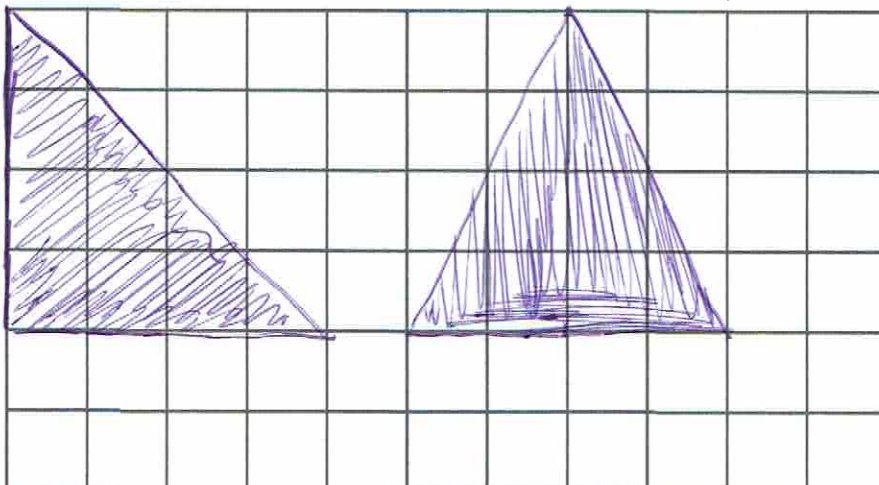


1x5
3x3

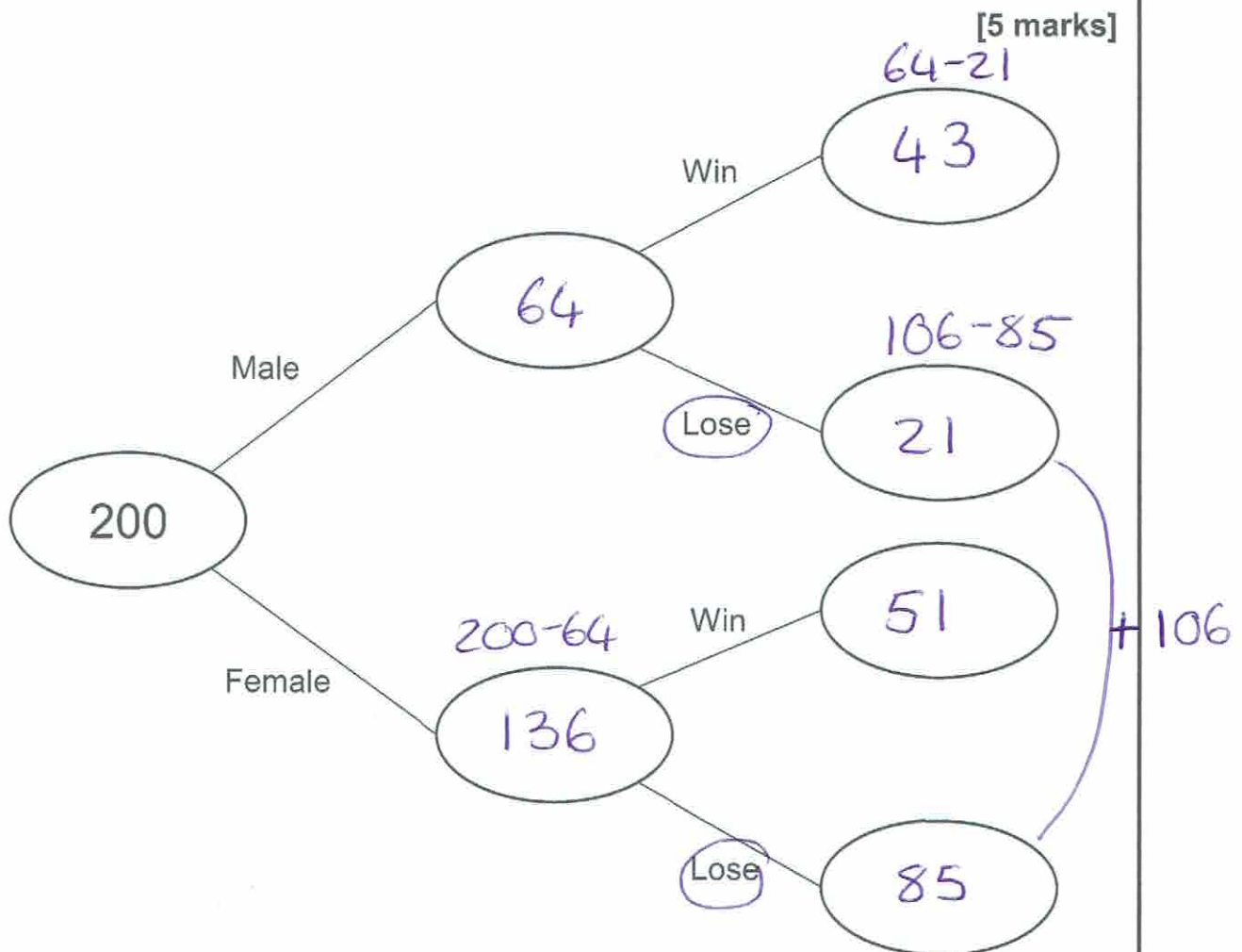
8 (c) Draw a triangle that has the same area as rectangle A.

→ inside $A=8$

[1 mark]



- 9 200 adults are surveyed at random in at a bingo hall.
32% of the customers are male.
106 out of the 200 adults have never won.
The females claimed to have won and lost in the ratio of 3:5.
Complete the frequency tree.



$$0.32 \times 200 = 64 \text{ male} \quad 200 - 64 = 136$$

Females .

$$W \quad | 12 | 17 | 17 | (51)$$

$$L \quad | 12 | 17 | 17 | 12 | 17 |$$

(85)

↑ 136

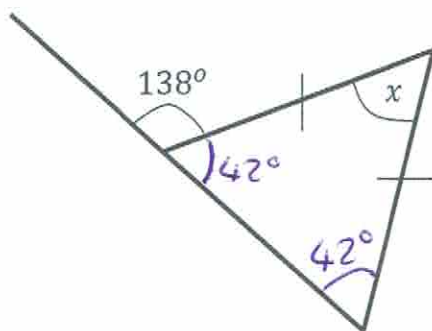
$$106 - 85 = 21$$

$$136 \div 8 = 17$$

$$64 - 21 = 43$$

- 10 Calculate the size of angle x

Not drawn
accurately



[3 marks]

Angles on straight line $180 - 138 = 42^\circ$

Isosceles triangle $180 - (42 + 42)$
 $= 180 - (84) = 96^\circ$

Answer $x = 96^\circ$

- 11 This table shows information about journeys X and Y.



	Distance travelled	Time taken	Average speed
X	85 ✓	1 hour 15 minutes 1.25 hours	68 mph
Y	26 miles	30 minutes ✓	52 mph

$S = \frac{\text{miles}}{\text{hour}}$

Complete the table.

[2 marks]

distance = $S \times t$

$= 68 \times 1.25$

$= 85 \text{ miles}$

Time = $d \div S$

$= 26 \div 52$

$= \frac{1}{2} \text{ hour}$

$= 30 \text{ mins}$

- 12 A shop has recently seen an increase in sales of royal memorabilia.

In March they sold 680 royal memorabilia tea towels.

In April they sold 918 royal memorabilia tea towels.

Calculate the percentage increase in the sale of royal memorabilia tea towels.

[2 marks]

$$\frac{\text{change}}{\text{original}} \times 100 = \frac{238}{680} \times 100 = 35\%$$

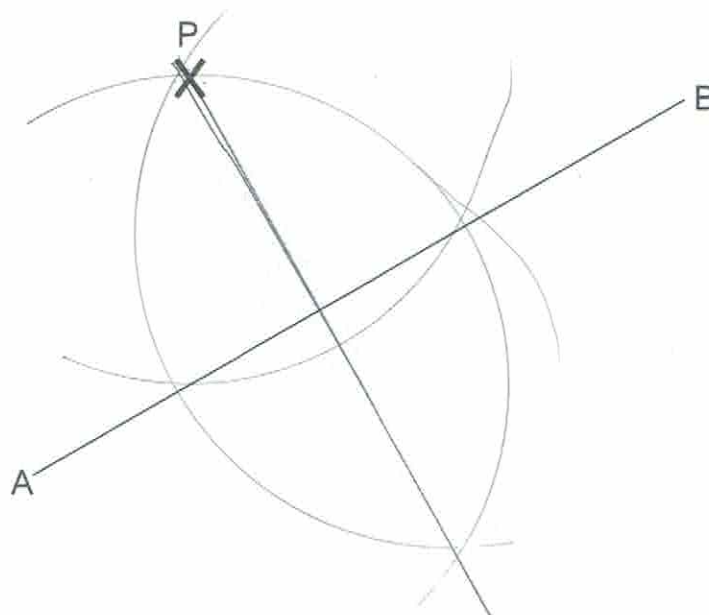
$$\begin{aligned} \text{change} &= 918 - 680 \\ &= 238 \end{aligned}$$

Answer _____

- 13 Use a ruler and compasses to construct a perpendicular bisector to the line segment AB that passes through the point P.

You must show all construction lines.

✓ Arc crossing
line AB in
two places
from point P. [3 marks]



✓ Ang Bisecting
arcs from
two new
points
AB

✓ perpendicular
line

- 14 Three shops have different offers on the same bags of popcorn.

Shop 1

Buy 1, Get 1
FREE!

Each bag costs
£2.50

Shop 2

SPECIAL
OFFER!
3 for 2

Each bag costs
£1.80

Shop 3

Buy 1 Get 1
**Half
Price**

Each bag costs
£1.64

Which shop should Rachel purchase popcorn from for her movie night?

You must show your working.

[6 marks]

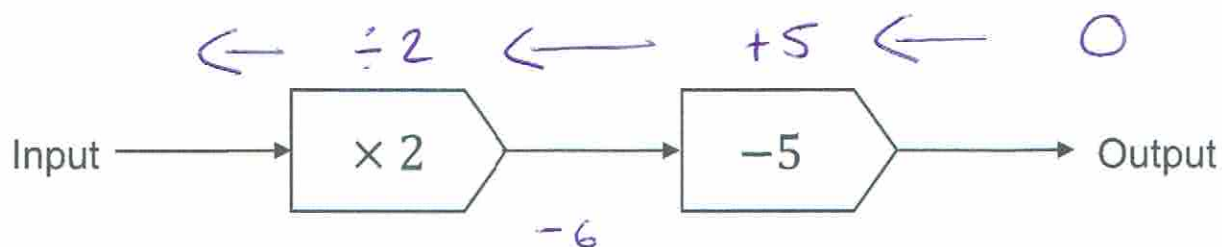
Shop 1 Two bags = £2.50 + free
1 bag = £1.25 ✓

Shop 2 3 bags = £1.80 + £1.80 + free ✓
= £3.60
1 bag = £1.20 ✓

Shop 3 2 bags = £1.64 + £0.82 ✓
= £2.46
1 bag = £1.23 ✓

Answer Shop 2 is the cheapest. ✓

15 Here is a function machine.



15 (a) Calculate the **output** if the input is -3 .

[1 mark]

$$(-3) \times 2 = -6$$

$$-6 - 5 = -11$$

Answer

-11 ✓

15 (b) Calculate the **input** if the output is 0 .

[1 mark]

$$0 + 5 = 5$$

$$5 \div 2 = 2.5$$

Answer

2.5 or $2\frac{1}{2}$ ✓

15 (c) Write an expression for the output if the input is $3x + 1$.

[2 marks]

$$(3x+1) \times 2 = 6x+2 \quad \checkmark$$

$$6x+2 - 5 = 6x-3$$

Answer

$6x-3$ ✓

- 16 A bag contains counters that are purple, yellow, blue and white.

Counter	Purple	Yellow	Blue	White
Probability	$17 +$	$2x +$	$x + 2 +$	$x + 5$

$= 100$

A counter is chosen at random.

The probability the counter is purple is $\frac{17}{100}$

Work out the probability it is blue.

\rightarrow 100 in the bag

[4 mark]

$$17 + 2x + x + 2 + x + 5 = 100 \quad \checkmark$$

$$4x + 24 = 100$$

$$4x = 76$$

$$x = 19 \quad \checkmark$$

$$\text{Blue} = x + 2$$

$$= 19 + 2$$

$$= 21 \quad \checkmark$$

Answer

$$\frac{21}{100} \quad \checkmark$$

- 17 Olivia and Sophie share sweets in the ratio of 3:5
 Olivia has 12 sweets less than Sophie.
 Work out how many sweets there are all together.

[3 marks]

$$\begin{array}{l} O \quad \boxed{6 \mid 6 \mid 6} \leftarrow 12 \\ S \quad \boxed{6 \mid 6 \mid 6 \mid 6 \mid 6} \\ \hline 6 \times 8 = 48 \text{ sweets } \checkmark \end{array}$$

2 boxes = 12 ✓
1 box = 6 ✓

Answer 48

- 18 A shape has an exterior angle of 30° .



Not drawn accurately

- 18 (a) How many sides does the shape have?

[2 marks]

$$\frac{n}{\text{Ext}} = \frac{360}{30} = 12 \text{ sides}$$

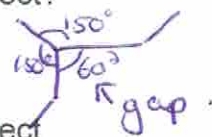
Answer 12 ✓

- 18 (b) Maria says that the shape tessellates. Is she correct?

You must give a reason for your answer.

Correct

Incorrect



[2 marks]

A 12 sided shape doesn't tessellate as the interior angle is $180^\circ - 30^\circ = 150^\circ$.
 $360 \div 150 = 2.4$ So 2.4 shapes fit around a point. There would be a gap of 60° with zero 12 sided shapes.

- 19 Here are the interest rates for a bank account.

Banks R Us
Interest: 2.4% per year compound interest. $100\% + 2.4\% = 102.4\%$ 1.024 ✓
No withdrawals allowed until the end of three years.

Daniel has £20 000 he wants to invest.

Calculate how much money Daniel will have at the end of the 3 years.

[3 marks]

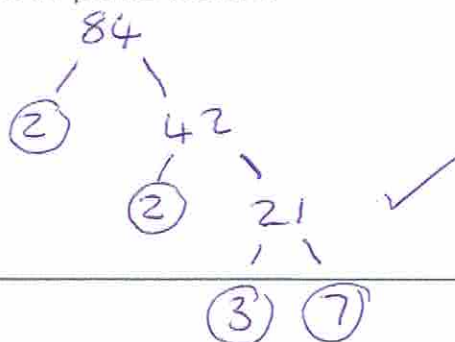
$$20000 \times 1.024^3 \checkmark$$

$$= 21474.83648$$

Answer 21474.84 ✓

- 20 Express 84 as a product of its prime factors. in index form.

[3 marks]



$$2 \times 2 \times 3 \times 7 \checkmark$$

Answer $2^2 \times 3 \times 7$ ✓

21 The weights of 40 new born babies were recorded.

Weight (w, pounds)	Number of babies	MP	Fxc
$5 \leq w < 6$	8	5.5	44
$6 \leq w < 8$	13	7	91
$8 \leq w < 10$	11	9	99 ✓
$10 \leq w < 12$	8	11	88
$w \geq 12$	0	—	—
<u>40</u>			<u>322</u> ✓

doesn't matter as Frequency is 0 →

21 (a) In which class interval is the median? $\frac{40+1}{2} = 20.5^{\text{th}}$.

Circle your answer.

[1 mark]

$5 \leq w < 6$

$6 \leq w < 8$

$8 \leq w < 10$

$10 \leq w < 12$

$w \geq 12$

21 (b) What is the modal class interval?

Circle your answer.

[1 mark]

$5 \leq w < 6$

$6 \leq w < 8$

$8 \leq w < 10$

$10 \leq w < 12$

$w \geq 12$

21 (c) Calculate an estimate for the mean weight of a new born baby.

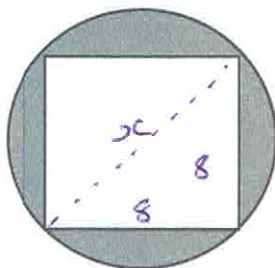
[4 marks]

$$\frac{322}{40} = 8.05$$

Answer

8.05 pounds ✓

22



Not drawn accurately

Hidden pythagoras!

The square has a length of 8 cm.

The circle has a diameter of 11.5 cm.

Will the square fit inside the circle.

You must show your working.

[3 marks]

Yes

No

$$x = \sqrt{8^2 + 8^2}$$

$$= \sqrt{128}$$

$$= 11.3 \text{ cm} \rightarrow \text{hypotenuse (longest length)}$$

As 11.3 is smaller than 11.5 the square will fit inside the circle. \rightarrow diameter longest length

23 (a) Simplify

$$6 \div 9 = \frac{1}{3} \checkmark$$

$$x^2 \div x = x$$

$$y^4 \div y^5 = y^{-1}$$

$$\frac{6x^2y^4}{9xy^5}$$

[2 marks]

Answer

$$\frac{1}{3}xy^{-1} \text{ or } \frac{x}{3y} \checkmark$$

23 (b) Expand and simplify

$$(x - 2)(x + 8)$$

[2 marks]

$$x^2 + 8x - 2x - 16 \checkmark$$

Answer

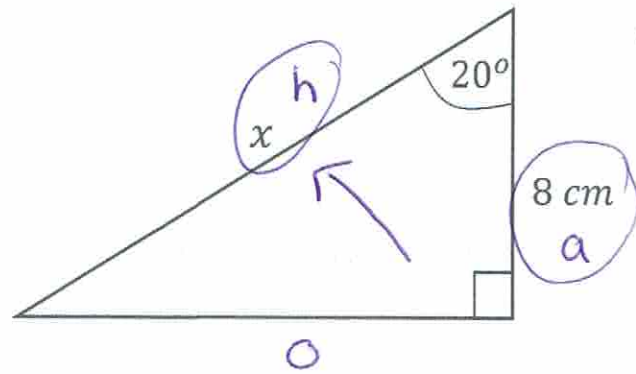
$$x^2 + 6x - 16 \checkmark$$

www.missbsresources.com

Do not write outside the box

24 Work out the length x .

Do not write
outside the
box



[2 marks]

So (Ca) Ta

$$\cos(20) = \frac{8}{x}$$

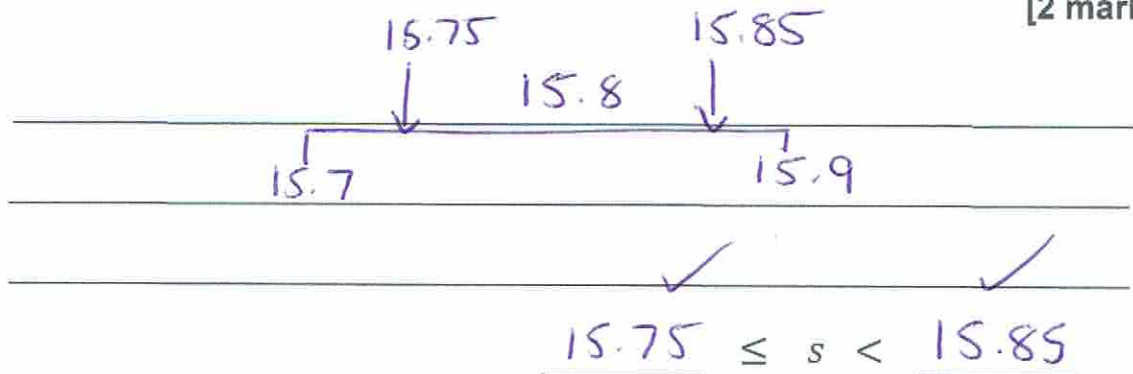
$$x = \frac{8}{\cos(20)}$$

$$\cos(20)$$

Answer 8.51 cm

25 The length of a cut piece of string, s , is 15.8 cm correct to one decimal place. Write down the error interval for the length of the piece of string.

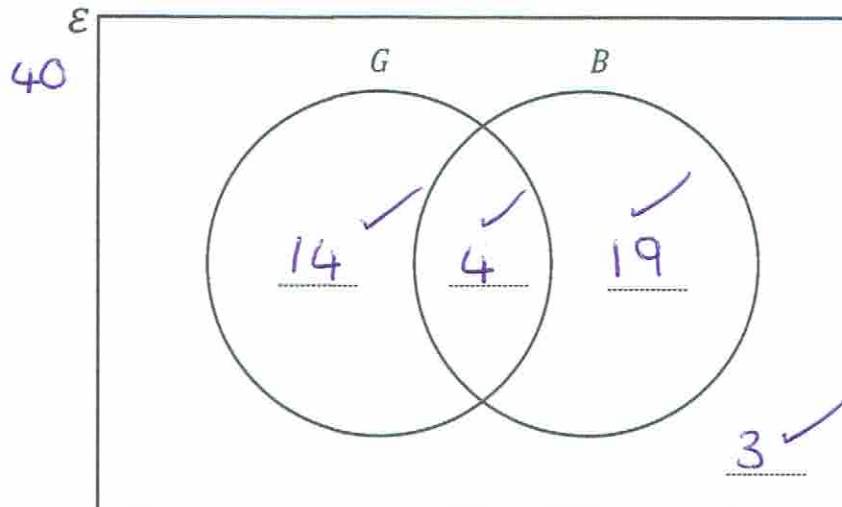
[2 marks]



26 Here is a Venn diagram

[4 marks]

Do not write
outside the
box



40 homeowners in London are asked if they have a garden or a balcony.

- 18 have a garden
- 23 have a balcony
- 14 have a garden but not a balcony.

Complete the Venn diagram.

G (18)

B (23)

$$18 - 14 = 4$$

$$23 - 4 = 19$$

$$40 - (14 + 4 + 19)$$

$$= 40 - 37$$

$$= 3$$

End of Questions

www.missbsresources.com

There are no questions printed on this page

Do not write
outside the
box

**DO NOT WRITE ON THIS PAGE
ANSWER IN THE SPACES PROVIDED**

www.missbsresources.com